

Installation instructions

MEMOLUB[®] EM



PRECAUTIONS


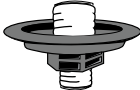
- Do not open the housing: loaded spring
- Hold MEMOLUB[®] down during manual checks
- Leq < 70 dB
- Use MEMOLUB[®] only for greasing machinery
- Use only lubricant cartridges and batteries recommended by the manufacturer

CONTENTS

Technical information	page 2
A Replacing cartridge	page 3
B Direct installation.....	page 3
C Remote installation.....	page 4
D Check Function	page 4

TECHNICAL INFORMATION

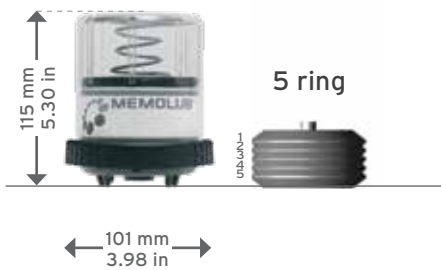
Settings of the Memo

	Color	Emptying time of cartridge	Average daily output
	white	24 months	0,15 cm ³ / day
	red	12 months	0,30 cm ³ / day

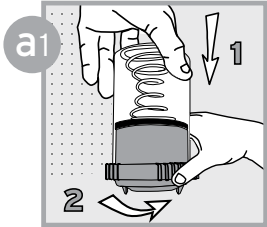
1 stroke with manual grease gun \approx 1 cm³

Dimensions

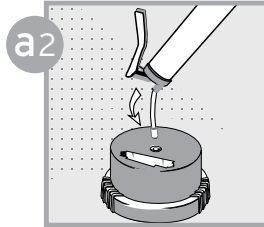
Standard
120 cm³



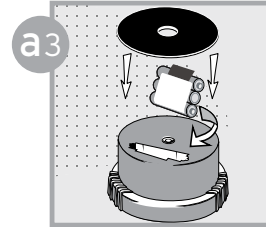
A REPLACING CARTRIDGE



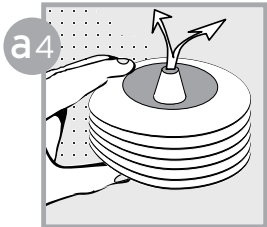
Open (fingers on ribs)



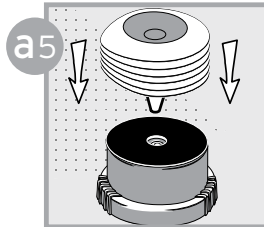
Prime MEMOLUB®



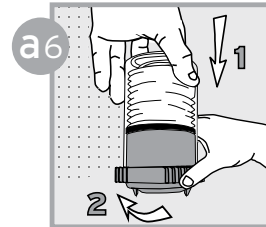
Insert new battery pack and seal



Squeeze air out of cartridge

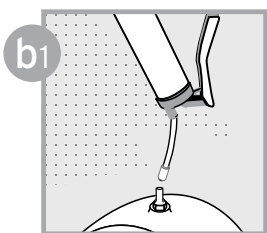


Replace cartridge

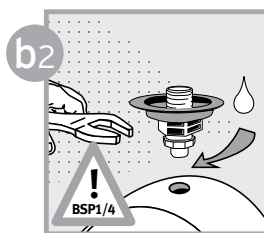


Close and lock (fingers on ribs)

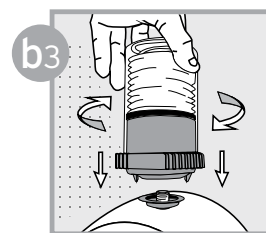
B DIRECT INSTALLATION



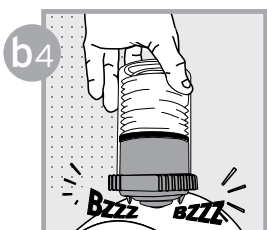
Prime lube point and remove nipple



Screw in Memo using threadlocker

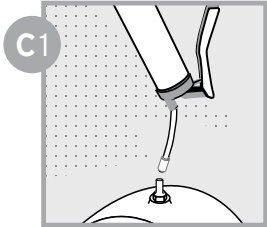


Install MEMOLUB® on Memo

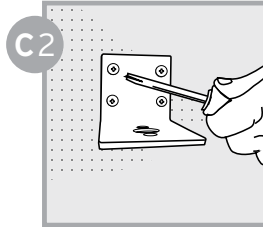


MEMOLUB® works immediately

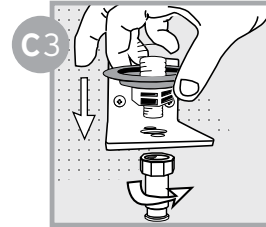
C REMOTE INSTALLATION



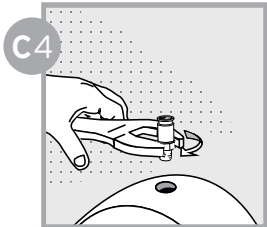
C1 Prime lube point and remove nipple



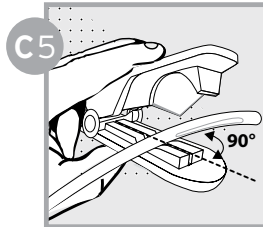
C2 Secure bracket



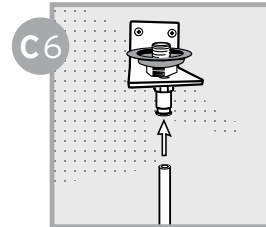
C3 Install Memo and F1/4 fitting



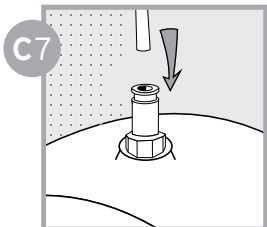
C4 Screw BSP 1/8 fitting



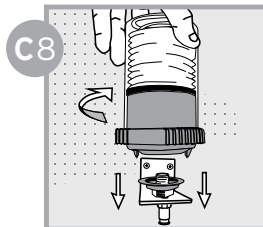
C5 Cut hose to required size



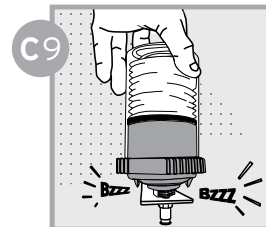
C6 Insert hose into quick fitting



C7 Insert hose into quick fitting

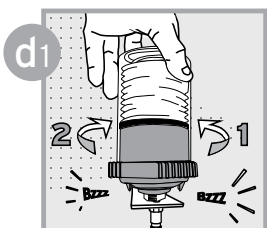


C8 Install MEMOLUB® on Memo

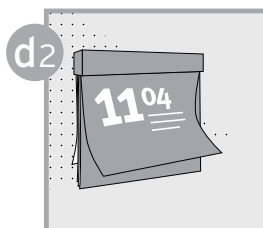


C9 MEMOLUB® works immediately

D CHECK FUNCTION



d1 To check unit: unscrew and screw again



d2 Check regularly